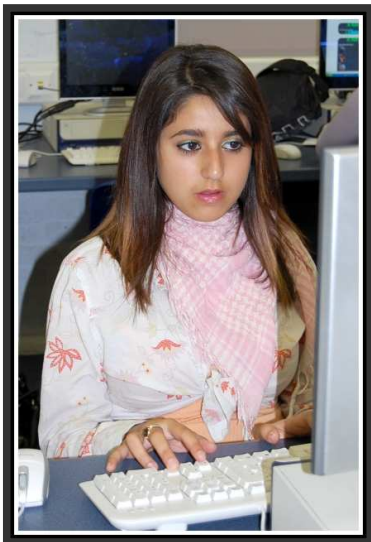


Cherwell School

Key Stage 4

Information for Parents/Guardians



September 2009

We hope the information in this booklet will help you to support your son/daughter through the next two years of their compulsory education.

During Years 10 and 11 all students should be engaged in independent learning. It is vital that your son/daughter keeps a record of when homework/coursework is set, what the task is and when it is due.

In Years 10 and 11 students will be set homework each week. However, students should also see homework as an opportunity to apply new knowledge, or review, revise and reinforce newly acquired skills. Students can use this time to gain background information on a unit of study so that they are prepared for future lessons by:

- Background reading
- Researching topics
- Collecting items for the unit

As parents/guardians you can help by:

- Taking an active interest in homework by checking the student planners
- Ensuring there is time set aside for work.
- Encouraging and supporting your child to become increasingly independent in the completion of work.
- Providing, where possible, a dedicated place and desk for homework.
- Encouraging your child to read and take an interest in current events.
- Communicating with teachers any concerns about the nature of homework and your child's approach to the homework.
- Alerting the school to any domestic or extra curricular activities which may need to be taken into consideration.

Further information is available on our website at www.cherwell.oxon.sch.uk

Your support and monitoring of your son/daughter's management of study time is, of course, a vital asset on the route to final success.

Mrs Mal Dolan
Head of Key Stage 4
2009

ASSEMBLY DAYS

Tuesday - Years 7 & 11

Wednesday - Years 8 & 10

Thursday - Years 9 & 13

Friday - Year 12 North
Site

Times of The School Day

8.30	-	8.45	Registration
8.45	-	9.45	Lesson 1
<i>9.45</i>	-	<i>9.50</i>	<i>Lesson change</i>
9.50	-	10.50	Lesson 2
<i>10.50</i>	-	<i>11.10</i>	<i>Break</i>
11.10	-	12.10	Lesson 3
<i>12.10</i>	-	<i>13.00</i>	<i>Lunchtime</i>
13.00	-	14.00	Lesson 4
<i>14.00</i>	-	<i>14.05</i>	<i>Lesson change</i>
14.05	-	15.05	Lesson 5

Term Dates for students

TERM 1	3 rd September ~ 22 nd October
TERM 2	2 nd November ~ 18 th December
TERM 3	5 th January ~ 12 th February
TERM 4	22 nd February ~ 1 st April
TERM 5	20 th April ~ May 28 th
TERM 6	7 th June ~ 22 nd July
INSET Day	2 nd October

GCSE Coursework/Controlled Assessment deadlines

KS4 2009-2011

SUBJECT	YEAR 10 2009-10	YEAR 11 2010-11
Art & Design		All work to be completed by Feb 2011
ASDAN	Ongoing throughout Year 10	Ongoing throughout Year 11
Astronomy	Begins April 2010, Term 5	Completed by April 2011
Business Studies	Single controlled assessment	
Citizenship	ACP submitted by end of January 2010	
D&T Food Tech	Begins Term 5, 2010	End of Term 4, 2011
D&T Graphics	Begins Term 5, 2010	End of Term 4, 2011
D&T Product Design	End of Term 3, 2010	End of Term 3, 2011
D&T Textiles	End of Term 3, 2010	End of Term 3, 2011
Digital Application	End of Term 6	End of Term 5
Dance	No controlled assessment	Controlled assessments in November/January /March
Drama	1 st portfolio Term 6	2 nd portfolio Term 1
English	All coursework by the end of the academic year	
Ethics & Philosophy	Not applicable	Not applicable
French	Term 5 and 6, 2010	Not applicable
Geography		End of term 2, 2010
German	Not applicable	Not applicable
Health & Social Care	Unit 2 Portfolio by end of January 2010	Unit 4 Portfolio by end of March 2011
History	Term 6, 2010	Term 2, 2010
ICT	Unit 1 by June 2010	Unit 2 by March 2011
Mathematics	No coursework	No coursework
Music	Composition - End of Term 2	End of Term 2
Sports BTEC	Preparation of Unit 1 By end of Term 4, 2010	Unit 2 - end of Term 1 2010 Unit 3 - end of Term 4, 2011
Sports Studies	Term 5 - Summer Projectwork, Analysing Lifestyle	Term 4 - Analysing Performance
Science	Coursework completed as practical assessments are timetabled throughout Year 10	Coursework completed as practical assessments are timetabled throughout Year 11
Spanish	Not applicable	Not applicable

Year 10 Examination Dates

13 th November	GCSE Maths module (modular groups)
w/c 9 th , 16 th & 23 rd November	GCSE Science (Physics) ISA Practicals
w/c 30 th November	GCSE Science (Physics) ISA exam
w/c 11 th , 18 th and 25 th January	GCSE Science (Chemistry) ISA Practicals
w/c 8 th February	GCSE Science (Chemistry) ISA Exam
April/May	Dance Exam
6 th May	GCSE Art Mock Exam
20 th May	GCSE Business Studies Exam
26 th May	GCSE Science (Biology) Exam
May and June	Various Year 10 School Exams
June (2 days)	GCSE Product Design Practical Exam
9 th June	GCSE Science (Chemistry) Exam
14 th June	GCSE Geography Exam
17 th June	GCSE Health & Social Care
21 st June	GCSE Maths module (modular groups)
21 st & 22 nd June	German Speaking Controlled Assessment Spanish Speaking Controlled Assessment
24 th June	GCSE Science (Physics) Exam
24 th June	GCSE Citizenship Exam
28 th June	GCSE Textiles Exam
2 th & 29 th June	French Speaking Controlled Assessment

Year 10 Other Key Dates

24 th September	Welcome to Key Stage 4 Evening
8 th - 17 th October	German Exchange arrives
20 th October	Geography trip to Lulworth Cove
8 th December	Christmas Concert
14 th - 16 th December	School Production
27 th January	Careers Convention
18 th - 29 th January	Public Speaking Competition
29 th January	Year 10 Reviews home
10 th February	Poetry Live Event
30 th March	Whole School Concert
29 th April	Year 10 Parents' Consultation Evening
25 th June	Arts Day and Evening, inc. Year 10 Recital
1 st July - 10 th July	German Exchange to Germany
7 th July	Sports Day
14 th July	Sports' Awards Evening
14 th July	Year 10 Reports home

Coursework, deadlines, useful websites, books, etc

English

English Language and Literature - Specification A (AQA syllabus 3702) English Literature - Specification A (AQA syllabus 3712)

Students have to complete five pieces of written coursework throughout their GCSE course. These include:

- | | |
|---|--|
| <ul style="list-style-type: none">• Original writing• Shakespeare• Wide reading | <ul style="list-style-type: none">• 20th Century drama• Media |
|---|--|

They also have to complete a folder of speaking and listening assessments and these count for 20% of their English GCSE. Coursework folders will be completed in the first three terms of the course with a deadline at the end of each term. Written coursework counts for 20% of the English and 30% of the Literature GCSE. The final deadline for all coursework is the end of term 6

BOOKS/GUIDES/WEBSITES:

Workbooks available on website/intranet for independent study to support classroom work on GCSE Literature set texts:

- Lord of the Flies
- Of Mice and Men

There is also a workbook to support students writing on 'Romeo and Juliet' for their coursework.

www.universalteacher.co.uk Andrew Moore's website covers all areas of our exam

www.buckingham.ac.uk/english/schools/ University of Buckingham's website area for schools. Good pre-1914 Poetry Bank resources.

www.bbc.co.uk/schools/gcsebitesize/english/ for help with English GCSE.

www.bbc.co.uk/schools/gcsebitesize/english_literature/ for help with English Literature GCSE.

www.boox.org.uk/ The Reading Agency's website with new reads, reviews and lots of articles to promote independent reading. Also links

to shadowing awards, eg. Booktrust Teenage Prize.

www.schoolshistory.org.uk/english.htm NGFL (National Grid for Learning) approved web-based revision for English GCSE.

HOMEWORK: Ideas and suggestions for further work and homework on the school website, under Subject/English/Key Stage 4. Also, some groups will be given workbooks for homework, so that they are working through tasks independently.

Maths

Modular Course (Edexcel syllabus 2381)

Most classes will follow this course which comprises of three modules. The timing and weighting of each module is shown below. There is no coursework requirement and pupils may be entered at either the Foundation or the Higher tier.

Unit 1	20%	November of year 10
Unit 2	30%	June of year 10
Unit 3	50%	June of year 11 for most students. Some will sit it in November of year 11 instead.

Linear Course (AQA syllabus 4306)

This GCSE course is examined at the end of Year 11. Students will sit two exams of 2 hours each, one of which is a non-calculator paper and the other a calculator paper. There is no coursework requirement and students following the linear course are expected to be entered for the Higher tier.

BOOKS/GUIDES/WEBSITES:

www.bbc.co.uk/revision

www.mymaths.co.uk

www.s-cool.co.uk

www.funbrain.com/kidcenter.html

www.nrich.maths.org.uk

www.gcsemaths.fsnet.co.uk

www.mathsnet.net

www.mazeworks.com

www.kevinsplayroom.co.uk

www.counton.org

HOMEWORK:

Homework is usually set twice a week and pupils will be provided with a textbook which is kept at home. Homework may also be set from www.mymaths.co.uk and students will be given a password and login so that they can access it.

Science

Science: GCSE (AQA syllabus 4462)

All coursework is based on practical work and written assessments both done in class, which is on-going throughout the course. Each pupil will do a piece of coursework in Biology, Physics and Chemistry. Students will be told in advance of an assessment and made aware of the course content it will cover. Coursework is worth 25% of the final GCSE.

Science: GCSE: Additional Science (AQA syllabus 4463)

All coursework is based on practical work and written assessments both done in class, which is on-going throughout the course. Each pupil will do a piece of coursework in Biology, Physics and Chemistry. Students will be told in advance of an assessment and made aware of the course content it will cover. Coursework is worth 25% of the final GCSE.

Science: GCSE: Triple science (AQA syllabuses Biology 4411, Chemistry 4421 and Physics 4431)

All coursework is based on practical work and written assessments both done in class, which is on-going throughout the course. Each pupil will do

a piece of coursework in Biology, Physics and Chemistry. Students will be told in advance of an assessment and made aware of the course content it will cover. Coursework is worth 25% of the final GCSE.

Science: GCSE: Additional Applied Science

Coursework counts for 60% of the final mark. This will be done during the summer of Year 10 and in Year 11. Each candidate will produce a portfolio of work including 3 reports. These will be done in class and at home and will be based on taught material and case studies.

Science GCSE resits

If students wish to take a science resit, the completed resit forms, together with the money must be handed into the Exams Officer before any entry can be made.

BOOKS/GUIDES/WEBSITES:

Accessing the shared Science area. This lists a vast number of useful sites.

Also, follow the link to Science on the school website. Revision guides available from Faculty.

HOMEWORK:

Students will be set a variety of homework in each of their 3 sciences; these will include short regular sets of questions, practical write ups and longer research homework. Students will also be set revision homework for regular end of topic tests and in preparation for practical ISAs. Students are expected to keep up-to-date on scientific issues in the news, using TV, newspapers or internet.

Science: GCSE: Astronomy

There is a 25% coursework element for this GCSE. Students take a single 2 hour exams at the end of year 11.

The syllabus consists of five areas that are covered successively in each lesson, in each term:

- Planet Earth: the days and the seasons
- The Moon, the Sun and eclipses
- Planets and asteroids, meteors and comets

- Stars, Constellations and Galaxies
- Observing techniques and space exploration

The GCSE qualification is graded and certificated on an eight-grade scale from A* to G.

BOOKS/GUIDES/WEBSITES:

There are numerous books, but no useful textbook. We supply a guide in year 11 (Marshall, N. **GCSE Astronomy** (Mickledore, 2001) ISBN 0953634523.) In addition, many excellent books exist in the school library.

A good recent text that covers all, and more, of the course and the background required is 'Universe' edited by Robert Dinwiddie and Martin Rees, published by DK Publishing (Dorling Kindersley) (16 Oct 2005 **ISBN-10: 0756613647.**)

The internet is awash with sites of varying quality. Excellent starting points for background information are the websites of :

www.nasa.gov/audience/forstudents/9-12/features/index.html NASA Education

www.bbc.co.uk/science/space/spaceguide/skyatnight/ BBC Sky at Night

www.newscientist.com/blog/space/ New Scientist

HOMEWORK:

Students need to build up and maintain their background learning and are given material to read and remember for homework. To support their understanding, the scientific knowledge gained through 'normal' science lessons is sufficient for the course.

Citizenship

Citizenship Studies GCSE (AQA syllabus 3107)

All students in year 10 are in the second year of the GCSE Citizenship Studies course (AQA Syllabus 3107). Students started the course in year 9 and sit the 90 min exam in the summer of year 10.

The main focus for students is the Active Citizenship Project. This was started in Summer of year 9 and will be completed and submitted by Term 3 of year 10 - this is the coursework element of the course and

account for 55% of the total mark.

Full details of the project and how to write it up can be found on the shared area of the school network and on the 'moodle' under ACP.

As well as covering the GCSE specification students will also have lessons on a range of PSHE topics.

Topics covered over the 2 year course

What is Citizenship?

Human rights

Politics and Political Systems

Multi-cultural Britain

Media and Society

Sustainable Development/ Global Issues

World of Work

Legal Systems

PSHE/SRE

BOOKS/GUIDES/WEBSITES:

Students can buy a revision/ study guide from the faculty - please ask your teacher.

Currently recommended is the CGP GCSE KS4 Citizenship Book (ISBN 978 1 84146 965 2) and the workbook (ISBN 1 84146964 5)

Useful websites

The exam board specification

<http://www.aqa.org.uk/qual/gcse/cit.php>

Useful general information

http://www.bbc.co.uk/schools/websites/11_16/site/citizenship.shtml

<http://www.citizenshipfoundation.org.uk/main/page.php?40>

<http://www.dfes.gov.uk/citizenship/section.cfm?sectionId=16&hierachy=16>

<http://www.ycponline.co.uk>

www.spired.com

PSHE issues

<http://www.channel4learning.com/support/websites/pshe.html>

<http://www.childline.org.uk>

<http://www.kidscape.org.uk/>

<http://www.teenagehealthfreak.org>

<http://www.talktofrank.com>

HOMEWORK:

As well as working on the coursework, other tasks will be set during the year, the type and length of these will vary but students should expect between 30 and 60 minutes worth of homework over a two week period.

Many Citizenship tasks will require students to discuss issues with their families and friends as well as researching current issues in the news. It is suggested that students engaged with the news daily.

ICT

This course is entirely coursework based, and students build up a portfolio of work throughout the two years. The deadline for the first unit, when the coursework is moderated by an external examiner, is during the summer of Year 10. All resources for the course can be found on the VLE at www.klp.rm.com.

Certificate in Digital Applications

Each year students will complete a Summative Project Brief which is set by the exam board. This runs for approximately 40 hours of lesson time in each year. *The Year 10 deadline is the end of term 6, and for Year 11 it is the end of term 5.*

HOMEWORK:

Not applicable as all coursework is done in lessons

ASDAN

Coursework and folder work is ongoing throughout Years 10 and 11.

Entry Level Awards

ASDAN Bronze Award and Silver Award

National Navigators Award

Level 1 Awards

ASDAN Certificate Of Personal Effectiveness (C.O.P.E)

ASDAN Wider Key Skills

- Improving Own Learning
- Working With Others
- Problem Solving

ASDAN Certificate of Personal and Social Development

Controlled tasks are set at the end of each module.

Art, Design, Technology

Art & Design (EDEXCEL1027)

Pupils need to have one full unit of course work and a separate externally set unit for exam. Course work is worth 60% and the exam 40% of the final grade. The best 40% of the coursework is then submitted for final assessment. All work is assessed in the same way and evidence of all 8 marking criteria are assessed equally.

The marking criteria

AO1	AO2	AO3	AO4
AO1 Develop and explore through contextual and cultural ideas	AO2 Refine and develop ideas through experimentations and materials	AO3 Record ideas and observations, selecting and recording information	AO4 Realise intentions making critical and evaluative connections.

All work is based on contemporary artist and regular visits to galleries are advised, most galleries have useful websites that can be used for research.

HOMEWORK:

Regular homework set with after school coursework catch-up lessons on Tuesdays and Wednesdays

Design and Technology:

Graphic Products. AQA 4550. Coursework accounts for 60% of their GCSE and should take approximately 45 hours to complete. There is a final examination in June 2011 which is 2 hours long and accounts for 40% of their GCSE. In Year 10 students do a number of practice projects all designed to give them experience of the final GCSE coursework requirements. Homework is set on project research and theory for the final exam.

Product Design OCR Syllabus J305, Graphic Design AQA syllabus 4550, Food AQA, Textiles OCR

Product Design. OCR J305. Made up of four mandatory units. **Unit 1** is a design only portfolio (30%). **Unit 2** is a six hour practical exam spread over two days (20%). **Unit 3** is a Making, Testing and Marketing of a 3D product including a portfolio of evidence (30%). **Unit 4** is an externally assessed examination in June 2011 which is 1 ½ hours long and accounts for the final 20% of their GCSE.

Each unit will have its own specific homework and will be set, as and when it is being taught.

Distance Learning: A range of resources can be found by accessing, from home or within school, the learning platform called **Kaleidos** (www.klp.rm.com). It can also be used for submitting set homework and gaining feedback from the Product Design teachers.

Food Technology. AQA 4545. Coursework accounts for 60% of their GCSE, and should take approximately 45 hours to complete. There is a final written examination in June 2011 which is 2 hours long (untiered),

and accounts for 40% of their GCSE grade. In year 10, students complete a number of "design and make" projects so that they expand their cooking repertoire, and are able to complete a final "design and make" folder in year 11. Homework is set on project research (including recipe research and sourcing ingredients for "making sessions") and theory for the final exam.

1 major piece of coursework (60% practical 40% Folder) starting in Term 6 of Year 10, which makes up 60% of overall GCSE mark end of Term 4 in Year 11. 2 hours foundation exam, 2 hours higher exam.

OCR GCSE Textiles (Full Course) A572/J307

60% -Two practical assessments, each worth 30%, with accompanying portfolio.

Assessment 1 has emphasis on sustainability and recycling (and will be completed in year 10)

Assessment 2 has a more technical emphasis and will culminate in a quality product.

Both assessment topics are set by the exam board and will be carried out within a time limit of 20 hours.

40% -2 written exams. One exam will be taken at the end of year 10 and the other at the end of year 11. Each written exam is 20% of the final mark

During the course students will undertake various practical tasks. Areas covered include printing, dyeing, beading, quilting, machine and hand embroidery. Most importantly they will spend time improving their sewing machines skills.

At the end of year 10 students will learn how to use a commercial pattern to make a small child's item of clothing. This will further their knowledge and practical skills ready for the second assignment and second exam.

Homework is set on project research and theory for the final exam.

BOOKS/GUIDES/WEBSITES:

Design and Technology: Distance Learning. Students can e.mail their teacher from home **using the school e-mail** with questions. They will then reply with diagrams, examples, etc as appropriate.

The subject link on the school website has a range of useful websites for pupils to access.

www.technologystudent.co.uk is the most valuable website for all DT pupils as it covers all areas and Graphics and Product Design.

www.helenhudspith.com is good for all areas of DT revision as well as BBC Bitesize

HOMEWORK:

All teachers will set homework which is appropriate to the work being undertaken in class. Some may be research, some more focused tasks, but all teachers expect Homework to be in on time and done to the best of the student's ability.

Business Studies

Business Studies and Economics AQA 3132F/H

In Year 10 students will complete a Controlled Assessment on Investigating a Business (Unit 3) in July, as set by the exam board each year, allowing students to demonstrate their understanding of the learning that has taken place thus far. They will spend eight hours researching the Business which they will then use as an appendices for their write up, to be completed in three hours under exam conditions. The coursework accounts for 25% of their final mark and must be completed before the end of year 10. In order to help our students achieve to their full potential they can access Controlled Assessment tips and guidance via the schools Virtual Learning Environment during June-July.

At the end of Year 10 students will sit a 1 hour exam on Setting up a Business (Unit 1), 40% of their final grade, covering start ups, marketing, finance , people in business and operations management. At the end of Year 11 students will sit an additional exam, Growing as a Business (Unit 2), based upon their Year 11 work which build upon Unit 1 work.

Throughout both years students will engage in a number of class

activities. In partnership with The Oxford Trust, our pupils will gain many skills from a range of enterprising tasks. Our students will also have the opportunity to visit Cadbury and Oxford Mini. The purpose of these visits is to help students grasp theoretical issues in a practical environment. The subject is extremely interactive and we use a range of teaching methods that engage our students and allow them to express their ideas in an environment that is conducive to achievement.

In both exam students will receive advice from a senior examiner in preparation and will be able to access a wide range of revision resources in lessons, the School library and in Cherwell's Business Virtual Learning Environment.

BOOKS/GUIDES/WEBSITES:

Letts Business Studies GCSE Success

AQA Business for GCSE; Setting up a Business

AQA Business for GCSE; Growing as a Business

AQA Business Studies for GCSE

Business Studies (GCSE Bitesize Revision) ISBN: 0563501219

CGP GCSE Business Studies - Revision Guide

Essential Business Studies for you

www.businessstudiesonline.co.uk

www.bbc.co.uk/schools/gcsebitesize/business

www.bized.ac.uk

www.justbiz.org

www.tutor2u.net

www.aqa.org.uk

HOMEWORK:

Students are set a research based or in June/July a controlled assessment homework once a fortnight. In addition each week they are set a unit based homework on a current area of study. This may be short answers from their Textbook or worksheet, business articles as extended writing, or research on business issues from newspapers, magazines, TV, radio or the internet. In preparation for examinations students will be given revision sheets, practice exercises and past exam questions to complete at home. In total they can expect two to three hours of homework per fortnight

Philosophy & Ethics (Religious Studies)

There is no coursework element for this GCSE and students take four 1 hour papers at the end of the course.

Unit B601: <i>Philosophy 1 (Deity, Religious and Spiritual Experience, End of Life)</i>
Belief about deity Religious and spiritual experience The end of life
Unit B602: <i>Philosophy 2 (Good and Evil, Revelation, Science)</i>
Good and evil Religion, reason and revelation Religion and science
Unit B603: <i>Ethics 1 (Relationships, Medical Ethics, Poverty and Wealth)</i>
Religion and human relationships Religion and medical ethics Religion, poverty and wealth
Unit B604: <i>Ethics 2 (Peace and Justice, Equality, Media)</i>
Religion, peace and justice Religion and equality Religion and the media

BOOKS/GUIDES/WEBSITES:

Applied Ethics Student Book with ActiveBook CD-ROM 9780435501518

Philosophy Student Book with ActiveBook CD-ROM 9780435501501

Introducing Philosophy of Religion by Dilwyn Hunt ISBN: 0748794662

Introducing Religious Ethics by Dilwyn Hunt ISBN: 978-0748784455

Philosophy Through Christianity for OCR GCSE Religious Studies by Lorraine Abbott ISBN: 978-0340916773

Ethics Through Christianity for OCR B GCSE Religious Studies by Lorraine Abbott ISBN: 978-0340984123

Ethical Issues in Six Religious Traditions
by Peggy Morgan (Editor), Clive Lawton ISBN 978-0748623303

Websites

http://www.ocr.org.uk/qualifications/gcsefor2009/religious_studies_b/
The specification details from the exam board with sample questions and markschemes

www.tsas-re.freereserve.co.uk/gcsefull.html

www.bbc.co.uk/schools/gcsebitesize/re

<http://re-xs.ucsm.ac.uk>

www.bbc.co.uk/religion

www.rsrevision.com/GCSE/shortcourse/index.htm

www.faithnet.org.uk/ks4re_ocr_p&e.htm

www.thatreligiousstudieswebsite.com/index.html

<http://www.religionfacts.com>

<http://www.bbc.co.uk/religion/religions/>

<http://www.religioustolerance.org/>

<http://en.wikipedia.org/wiki/>

<http://www.sacred-texts.com/world.htm>

<http://www.reonline.org.uk>

<http://www.request.org.uk/index.php> (Christianity only)

http://www.channel4.com/culture/microsites/C/can_you_believe_it/religion/religions.html

HOMEWORK:

Specific homework tasks will be set at least every other lesson and should last between 30 and 60 minutes.

An extended project will be set during the first 2 terms which students will be expected to work on at home and should take a minimum of 15 hours to complete.

Students should also be reading or watching the news regularly and looking out for relevant documentaries to keep up to date with developments in philosophical, ethical and religious issues. Ongoing revision and development of notes should take place so that students are fully prepared for the final exams.

Geography

Year 10

Geography (Edexcel 'A' syllabus 2GA01)

Students will be learning about the Natural Environment and will sit the Unit 2 exam on this at the end of year 10, in June. The coursework (worth 25% of the final grade) will be completed in the Autumn term of year 11.

For more information on the course, please look at the Edexcel website: www.edexcel.com.

BOOKS/GUIDES/WEBSITES:

www.nationalgeographic.com - news, information & games

www.usgs.gov/science - all you need to know about Physical Geography

www.ordnancesurvey.co.uk/mapzone - mapwork help & fun

<http://earth.google.com> - free download of satellite views

<http://www.bbc.co.uk/schools/gcsebitesize/geography> The best revision site for our syllabus.

http://www.bbc.co.uk/schools/sosteacher/browse/ks4_geography.shtml

Linked to bitesize, this gives answers to common questions and allows you to email your own queries

<http://www.geography.learnontheinternet.co.uk> Sound reference material - useful for revision or homework problems

http://www.s-cool.co.uk/topic_index.asp?subject_id=20 A well-structured site, good for learning keywords & last-minute summaries. You can test yourself via multiple choice or exam-style questions

HOMEWORK:

Homework will vary, from brief research and short-answer questions, to essays and practice exam papers. In Year 11 particularly, homework is used to prepare for the exams, and it is essential that this opportunity is used to the full. Students are expected to keep up-to-date on geographical issues in the news, using TV, newspapers or the internet.

Health & Social Care

Health and Social Care (AQA double GCSE syllabus 4820)

There are 4 Units:

Units 1 & 3 are exam assessed

Units 2 & 4 are portfolio assessed

Unit 1: Exam to be sat in June 2010 (Understanding Personal Development and Relationships (48201)

Unit 2: Portfolio completed by January 2010 (Health, Social Care and Early Years Provision (48202)

Unit 3: Exam to be sat in June 2011 (The Nature of Health and Well-Being (48203)

Unit 4: Portfolio completed by end March 2011 (Promoting Health and Well-Being (48204)

All pupils will be expected to meet their hand-in deadlines. For portfolio work pupils will be given controlled assessment times and dates when they will be required to write their portfolios. These controlled assessment times will be staggered to ensure that pupils progress through portfolio work appropriately. All portfolios are internally assessed and externally moderated.

HOMEWORK:

Pupils will be expected to progress their portfolio work in order to prepare for their controlled assessment dates.

Pupils will be expected to complete homework and independent revision to prepare for their Unit 1 and 3 exams.

Homework details for Yr. 10 Health & Social Care

September - December 2009 - working on Unit 1 and Unit 2

Pupils will be given homework and worksheets to complete regularly.

Pupils will be sitting their first GCSE examination in June 2010, so will be expected to do independent revision over the Easter and May holidays in preparation for the exam and will be set practice exam

questions.

September 2009 - January 2010 - working on Unit 2 portfolio.
Pupils will be expected to research and prepare work for their portfolio for homework. The portfolio is completed through controlled assessment during lesson time. The portfolio should be completed by January 2010.

June-July 2010 - working on Unit 4 portfolio
Pupils will be expected to research and prepare work for the first of two tasks for their unit 4 portfolio. The portfolio will be completed through controlled assessment during lesson time.

History

Coursework in History

History Around us

The coursework for History is assessed by means of controlled assessment. Students will submit their responses to three structured questions prepared under controlled conditions. Tasks will be set by AQA and changed every year. Tasks set for the controlled assessment will be of a generic type in that they will be capable of being applied to the historical site which we use at Cherwell which is the Oxford Prison and Castle complex. Students carry out an historical enquiry related to this site. There are opportunities for pupils to work collaboratively on research and preparation and on some aspects of their coursework but final written answers that are part of the formal assessment must be the individual work of each student and will take place under supervised conditions.

The coursework will be completed during term 6 in year 10 and terms 1 and 2 in year 11

BOOKS/GUIDES/WEBSITES:

Medicine and Public Health through time - revision guide (For AQA

GCSE Specification A) ISBN 0-340-846939-9

Coordination group publications - Schools History Project
(ISBN 1-841-46301-9)

www.bbc.co.uk/schools/gcsebitesize/history This is an excellent site which has specific sections on both Medicine through Time and Germany 1918-1945. It provides factual information and also test questions. There is also a revision book available, make sure you get the one headed Schools History Project.

www.schoolhistory.co.uk An extensive site with a good range of revision materials and activities.

HOMEWORK:

During terms 1, 2 and the start of term 3 in year 10 students study the History of Medicine. They will have a weekly homework dealing with this unit. These will roughly follow the pattern below

1. Medicine in Prehistoric times
2. Medicine in the 1st Civilizations
3. Medicine in the Ancient world
4. Medicine in the Middle Ages
5. Medicine during the Renaissance
6. Medicine and the scientific Revolution
7. The discovery of germs
8. Developments in surgery in the 19th century
9. Public health in 19th century Britain
10. High technology medicine
11. High technology surgery
12. Governments and health care in the 20th century
13. Religion and medicine
14. War and medicine
15. Why did it happen then? The role of different factors in the history of medicine

During the second half of term 3 and terms 4 and 5 in year 10 students study the Nazi State 1933-45. They will have a weekly homework dealing with this unit. These will roughly follow the pattern below

1. An introduction to the Nazi police state
2. The Nazis and education
3. The Nazis and youth organizations
4. The Nazis and the churches

5. The Nazis and women
6. The Nazis and the workers
7. The Nazis and the Jews
8. The Nazis and the army
9. Opposition and resistance in Nazi Germany

During term 6 of year 10 and terms 1 and 2 of year 11 students work on the History Around Us module. This will include a weekly homework leading to the production of their coursework (see above)

Following their mock exams, students work during terms 3 and 4 on the rise of the Nazis to power in Germany. They will have a weekly homework dealing with this unit. These will roughly follow the pattern below

1. The German revolution of 1918-1919
2. Parties and governments in the 1920s
3. Problems for the Republic: The Treaty of Versailles
4. Problems for the Republic: Hyperinflation
5. Problems for the Republic: Right wing extremism
6. The Republic in the later 1920s
7. Hitler and the origins of Nazism
8. The Munich Putsch
9. The Nazis in the later 1920s
10. Politics 1929-1933
11. The 1933 election
12. Eliminating the opposition

Modern Foreign Languages

Languages

Year 11: (French AQA 1211) (German AQA 1216) (Spanish AQA 1246)

There is no coursework required for any of the languages. However all pupils will do a Speaking and Listening exam prior to the main block of exams (each worth 25%).

Year 10: French: Edexcel 2FR01; German: Edexcel 2GN01 Spanish: Edexcel 2SP01

You will be starting your controlled assessments in Term 6 of Year 10.

It will be a Speaking controlled assessment.

BOOKS/GUIDES/WEBSITES:

GCSE Revision Guides, available from Languages Department
Lonsdale (French and Spanish) at £2.50
Lonsdale (New Edition German) at £5.00 (includes CD)

For more information see your language teacher!

Some important websites:

www.bbc.co.uk/schools/gcsebitesize - select relevant Language

www.languagesonline.org.uk

www.frenchrevision.co.uk

www.frenchteacher.net

gut.languageskills.co.uk

www.zut.org.uk

www.the-voyage.com

www.blinde-kuh.de

www.york.ac.uk/inst/ltc/lfa/spanishgrammar.htm

www.mansioningles.com/Vocabulario.htm

www.auladiez.com/ejercicios/index.html

www.verbix.com/languages/spanish.shtml

<http://users.ipfw.edu/jehle/VERBLIST.HTM>

www.mec.es/sqci/uk/es/tecla/pruebatecla.shtml

<http://babelnet.sbg.ac.at/Carlitos/>

www.ashcombe.surrey.sch.uk/Curriculum/modlang/index_students.htm

HOMEWORK in MFL:

Homework will be set after each lesson. It will consist of:

- Learning new vocabulary or grammar rule
- grammar activities
- completing reading or writing tasks
- preparing a presentation in the target language
- investigating further a cultural topic discussed in class
- practising some text manipulation exercises online etc.
- creative tasks, such as films, presentations, plays
- group homework
- preparing oral questions

Performing Arts

Dance WJEC (PA1 - T1)

The new WJEC [dance strand] specification is an exciting new GCSE which encourages students to develop their performing arts skills through the following activities:

Part One is in three sections;

- Skills Audit - developing their own skills as a dancer. Identifying the skills they wish to improve and working towards that improvement
- Research Project - Looking at the skills and qualifications needed for two jobs in the performing arts industry
- Preparation for Performance - Carrying out practical workshops and research tasks to prepare for their own work in

Part Two

Students will create and perform a Themed Showcase Performance for a live audience. This will be examined by an external examiner. Students will also write an evaluation of the performance under controlled assessment.

No controlled assessments in Year10

Controlled assessments in Year 11: November/ January / March

Exam: Part 2 April/ May

BOOKS/GUIDES/WEBSITES:

Essential Guide to Dance By Linda Ashley ISBN-10: 0340803207

www.dancer.com/dance-links Especially good for Health & Safety, Nutrition, etc

www.aqa.org.uk Exam specification. (GCSE Performing Arts: Dance 3231)

www.theplace.org.uk Good for contemporary dance

www.sbc.org.uk Mainly advertising, but very good information about all types of dancing and good pictures of dancers

HOMEWORK:

Set regularly, a mixture of practical rehearsal tasks and written exercises for the coursework

Drama (Edexcel)

- 60% based on 6x1 hour workshops - practical work is assessed and a portfolio based on the workshops.
- 1st portfolio is Term 6 of Year 10, 2nd is Term 1 of Year 11.
- 40% exam practical taken in May.

Year 10 perform Hope for Humanity project term 3

Year 10 perform in primary schools July 2009

Year 11 mock exam based on (tbc) in November 2009

HOMEWORK:

Set regularly, a mixture of practical rehearsal tasks and written exercises for the coursework

Music (OCR Syllabus 1919)

All pupils perform their best solo piece in December (15%). They submit 1 other performance which must be an ensemble piece (15%). They submit 2 individual compositions from different areas of study, each worth 15%. The composition deadlines are the end of Terms 2 (Year 10) and 2 (Year 11)

BOOKS/GUIDES/WEBSITES:

- Music dictionaries - Penguin and Bennett are good
- Past listening papers
- Rhinegold Study Guide (OCR), especially the glossary
- The 6 'Language for Learning' sheets with all the Technical words
- CGP Guides - General and OCR
- www.themusicland.co.uk
- Glossaries in the back of your folders
- Tuesday/Wednesday After School Club
- Terminal Task - practice examples booklets
- www.bbc.co.uk/schools/qcsebytesize/music
- www.soundjunction.co.uk

HOMEWORK:

Set once a week prior to a listening test, often a research activity.

Sports BTEC

Coursework based.

In Year 10:

Preparation for Sport Unit 1

5 projects to be completed throughout Year 10

In Year 11:

Practical Sports Units 2

4 Projects to be completed by end of Term 2

Health, Safety and Injuries in Sport Unit 3

5 Projects to be completed by June of Year 11

HOMEWORK:

Catch up on any work missed through absence. There will be no set homework for this subject due to it being 100% coursework and the work needs to be completed in class. Up to date knowledge of sport through the media is very useful when completing projects in all units covered in this subject.

Sport Studies

Year 10

- B451 An introduction to Physical. Areas covered:
 - Key Concepts in Physical Education
 - Key Processes in Physical Education
 - Opportunities, pathways and participation in physical activity
- B452 Practical Performance and Developing Fitness
 - Two practical performances
 - Analysing Lifestyle task
 - Coaching and officiating available
 - Option to apply for additional activities

Year 11

- B453 Developing Knowledge in Physical Education. Areas covered:
 - Developing skills, techniques and motivation
 - Developing physical and mental capacity
 - Informed decision making using the principles of training and safe exercise
 - Opportunities, pathways and participation in Physical Education

- B454 Practical Performances and developing Skill
 - Two practical performances
 - Analysing Performance task focusing on skill improvement
 - Coaching and officiating available
 - Option to apply for additional activities

Contact list for Subject Leaders

(If you have any concerns or queries please contact your son/daughter's subject teacher via the Study Planner first.)

Subject	Lead Teacher	Phone 558719 + Ext	Email
Maths	Ms Roberts	228	sroberts@cherwell.oxon.sch.uk
English	Mrs Parish or Miss Bird	227	tparish@cherwell.oxon.sch.uk abird@cherwell.oxon.sch.uk
Science	Mrs Nash	215	jnash@cherwell.oxon.sch.uk
ICT	Mr Watts	281	jbwatts@cherwell.oxon.sch.uk
ASDAN	Mrs H Broady	212	hbroady@cherwell.oxon.sch.uk
Art	Ms McLaughlin	236	rmclaughlin@cherwell.oxon.sch.uk
Design & Technology	Mr Lang	209	dlang@cherwell.oxon.sch.uk
Geography	Mrs Wheeldon	333	vwheeldon@cherwell.oxon.sch.uk
History	Mr Price	247	cprice@cherwell.oxon.sch.uk
MFL - French	Mrs Sherrington	253 315	or fsherrington@cherwell.oxon.sch.uk
MFL - German	Mr Koglbauer	253 315	or rkoglbauer@cherwell.oxon.sch.uk
MFL - Spanish	Mr Simpson	253 315	or rsimpson@cherwell.oxon.sch.uk
PE	Mr Maudsley	245	mmaudsley@cherwell.oxon.sch.uk
Religious Studies/ Personal, Social and Health Education/ Citizenship	<u>Philosophy and Ethics</u> Mr Garton	252	pgarton@cherwell.oxon.sch.uk
	<u>Citizenship</u> Ms Codrington	252	mcodrington@cherwell.oxon.sch.uk
	<u>PSHE</u> Miss Dorn	252	ldorn@cherwell.oxon.sch.uk

Performing Arts	<u>Music:</u> Ms Grafe	241	sgrafe@cherwell.oxon.sch.uk
	<u>Dance:</u> Mrs Avery-Harris	240	javery-harris@cherwell.oxon.sch.uk
	<u>Drama:</u> Mr Slater	240	pslater@cherwell.oxon.sch.uk
Social Sciences	Mr Gray	254	tgray@cherwell.oxon.sch.uk

Key Stage 4 Assessment Calendar

	Review Card	Full report	Parents' Evening
Year 10	29 th January	14 th July	29 th April

Homework

Tips for parents/carers:

- Agree a routine for homework with your child. Life can become a constant 'nag' if you don't start this as soon as possible. Homework becomes an increasingly important part of the curriculum as your child goes through Key stage 4
- A good time for homework is after a short break when your child returns from school, get it out of the way early, leaving the rest of the evening free - who wants to start work at 7 p.m?
- Agree with your child that TV, other activities, phoning classmates, etc will only be possible after homework is done.
- Many children say that listening to music helps them concentrate and do their work. Agree whether this is allowed.
- Be prepared to invest time at first - for example be available for a set time each day to help with homework until the routine is established - it will be time well spent.
- Try to ensure that homework is done the night it is set to avoid 'build up'
- Check their planner with the child for what homework needs to be done, and when it is to be completed. Check they have everything they need to complete the tasks (ask them to tell you what they need to encourage independence).
- Make sure your child always writes the date and the title, and clearly labels it as homework (either in their book or on a worksheet or computer printout.)
- Encourage them to write down exactly what the teacher says (not, 'finish stuff in book', they'll have forgotten what 'stuff' is by the time they get home). If you and your child really cannot work out what is to be done, try ringing a friend in the same group, or as a last resort, write a note to the teacher asking for clarification and explaining that the homework will be done as soon as possible. Offer support but don't do it for them. Encourage them to ask in the lesson if they haven't fully understood the task set.

- Take an interest in the marks, comments and stamps on the homework your child gets back - celebrate success and give the clear impression that homework is important and valuable.
- If you have any concerns/queries regarding homework, do contact the school.
- Useful websites: Sam Learning (via Cherwell website),
<http://www.standards.dfes.gov.uk/homework> ,
www.homeworkhelper.co.uk
<http://www.channel4.com/learning/microsites/H/homeworkhigh>

Help with revision

Exams are one of the most stressful things in any child's life. With the revision and exam season fast approaching, it may seem that there is little more that can be done to help. However, there are steps you can take to help your child do well, such as:

- Provide a quiet space for your child (not where the TV can distract them)
- Keep younger children out of their way
- Make sure your child has a revision timetable of manageable pieces of work and checklists for them to work to
- Encourage them to attend any special revision classes on offer
- Their timetable should include time for relaxing - make sure they take regular breaks and that they get to bed at a reasonable time, especially the night before an exam

For more information, the following links will provide help and advise students facing exams:

www.cherwell.oxon.sch.uk/help/samhelp.php SAM learning site

www.bbc.co.uk/schools/revision

www.learnthings.co.uk